

Customer :

customer

Customer part :

customer part

Comment :

Comment

S1=2.54

S2=2.66

Tmax=453

Tp S2=492.0

PI=0.49

HI=89

Sample =1730.80

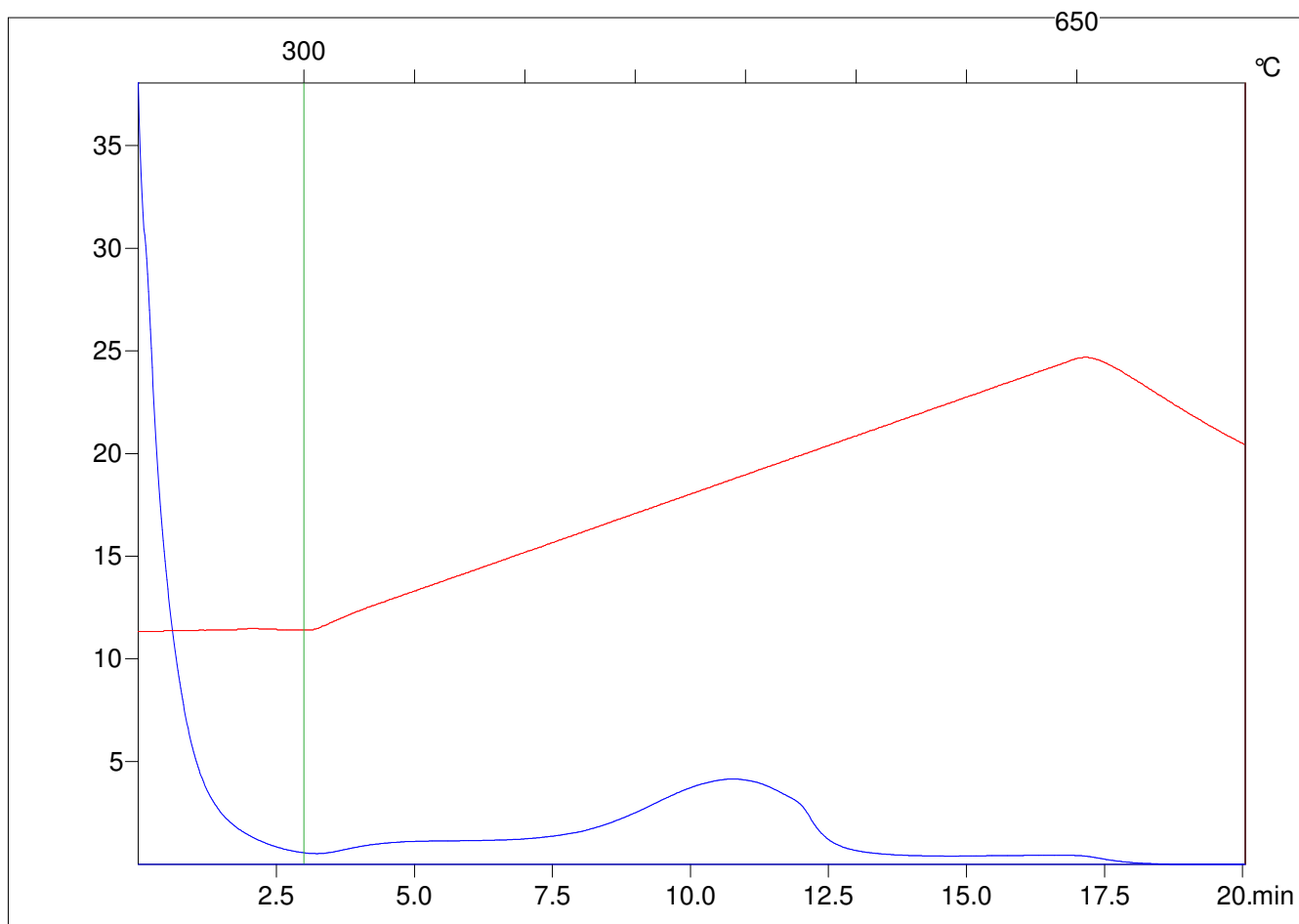
Method =Bulk Rock

Cycle=Basic

KFID(10\*9)=1444

Qty =70.2

TOC=2.98



C:\VINC\PK2\_1792\PK052.R00 : FID pyrolysis graphic

State Ok

Pyro Status Negative value

Oxi Status Ok